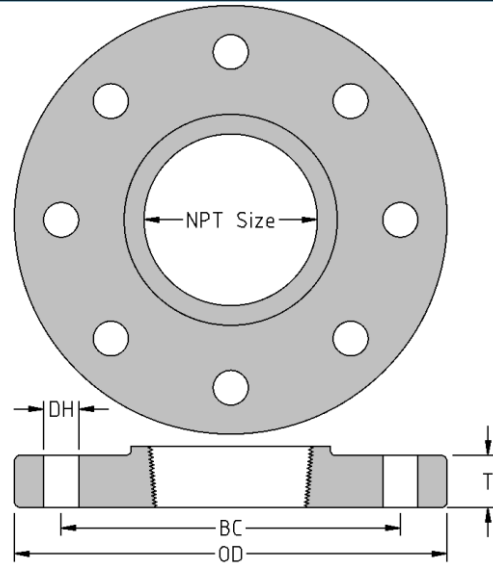




**SERVICE METAL**  
*Trust In Every Connection*

MASTER DISTRIBUTOR OF  
PIPE FITTINGS & VALVES

Companion Flanges  
**150# Lead Free Brass\***  
Inches / Pounds



Size	Diameter Holes	# of Holes	Outside Diameter (OD)	Bolt Circle (BC)	Thickness (T)	Companion Flanges Weight (in Pounds)
1/2	0.62	4	3.50	2.38	0.31	0.78
3/4	0.62	4	3.89	2.75	0.34	1.02
1	0.62	4	4.25	3.12	0.38	1.49
1 1/4	0.62	4	4.62	3.50	0.41	1.96
1 1/2	0.62	4	5.00	3.88	0.44	2.51
2	0.75	4	6.00	4.75	0.50	3.82
2 1/2	0.75	4	7.00	5.50	0.56	6.04
3	0.75	4	7.50	6.00	0.62	7.31
4	0.75	8	9.00	7.50	0.69	11.02

**Lead Free Brass\*** Castings conform to ASTM B584 C89833  
**Lead Free Brass\*** Fitting Dimensions conform to ASME B16.24  
NPT Threads on all fittings conform to ASME B1.20.1

**NSF/ANSI/CAN 61 Drinking Water System Components – Health Effects**  
**NSF/ANSI/CAN 372 Drinking Water System Components – Lead Content**

**\*Conforms with lead content requirements for lead-free plumbing as defined by the U.S. Safe Drinking Water Act. Certified <0.25 weighted average % lead.**