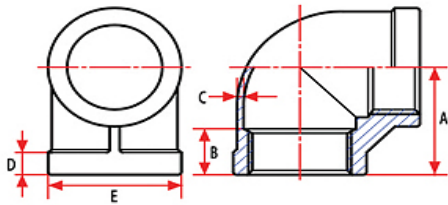


# MSS SP-114 HEAVY PATTERN STAINLESS STEEL PIPE FITTINGS ELBOWS - 90° ELBOWS



304 SS	316 SS	Size	Weight (LBS)	A	B	C	D	E
SS304-60001	SS316-60001	1/8"	0.07	0.74	0.27	0.11	0.3	0.72
SS304-60002	SS316-60002	1/4"	0.0871	0.74	0.33	0.124	0.20	0.81
SS304-60003	SS316-60003	3/8"	0.1213	0.85	0.36	0.081	0.20	0.96
SS304-60004	SS316-60004	1/2"	0.1808	1.02	0.42	0.085	0.24	1.15
SS304-60006	SS316-60006	3/4"	0.3086	1.20	0.49	0.104	0.26	1.40
SS304-60010	SS316-60010	1"	0.4619	1.38	0.57	0.106	0.29	1.70
SS304-60012	SS316-60012	1 1/4"	0.7275	1.61	0.65	0.116	0.33	2.05
SS304-60014	SS316-60014	1 1/2"	0.9259	1.77	0.68	0.126	0.36	2.33
SS304-60020	SS316-60020	2"	1.4815	2.08	0.73	0.138	0.40	2.82
SS304-60024	SS316-60024	2 1/2"	1.9731	2.47	0.89	0.177	0.46	3.15
SS304-60030	SS316-60030	3"	3.1526	2.83	0.95	0.187	0.53	3.83
SS304-60040	SS316-60040	4"	5.5402	3.53	1.04	0.212	0.63	4.83

## MSS SP-114 HEAVY PATTERN STAINLESS STEEL PIPE FITTINGS

Stainless steel MSS-SP114 heavy pattern fittings are investment castings.  
Available in a full range from 1/8" to 4" in both 304 and 316 grades of stainless steel.  
All fittings are threaded to NPT standard in compliance to ASME B1.20.  
Castings are made in accordance to ASTM 351 and heat treated and tested in accordance to ASTM A262

OEMS AND MANUFACTURERS TRUST BFO TO KEEP YOUR OPERATION FLOWING SMOOTHLY

BUYFITTINGSONLINE.COM | 1.800.569.0810 | BFO@QMCTECHNOLOGIES.COM