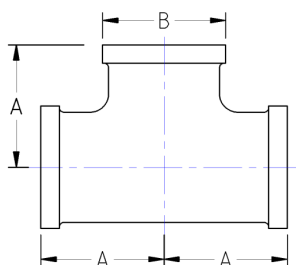


## CLASS 150 MALLEABLE IRON PIPE FITTINGS STRAIGHT TEES



**Class 150 Malleable Iron - Female NPT x Female NPT x Female NPT  
Black and Galvanized**

Nominal Pipe Size	Center to End (A)	Outside Diameter (B)	Nominal Metal Thickness	Weight (lbs)
1/8"	0.69	0.69	0.09	0.09
1/4"	0.81	0.84	0.09	0.15
3/8"	0.95	1.01	0.10	0.23
1/2"	1.12	1.20	0.10	0.36
3/4"	1.31	1.46	0.12	0.56
1"	1.50	1.77	0.13	0.90
1-1/4"	1.75	2.15	0.14	1.30
1-1/2"	1.94	2.43	0.15	1.73
2"	2.25	2.96	0.17	2.63
2-1/2"	2.70	3.59	0.21	4.90
3"	3.08	4.28	0.23	7.10
3-1/2"	3.42	4.84	0.25	9.00
4"	3.79	5.40	0.26	11.30
5"	4.50	6.58	0.30	19.40
6"	5.13	7.77	0.34	25.50
8"	6.50	9.76	0.39	44.70

### CLASS 150 MALLEABLE IRON PIPE FITTINGS

#### MALLEABLE IRON THREADED FITTINGS, CLASS 150 & 300 CONFORMANCE:



Malleable Castings conform to ASTM A197

Hot-Dipped Galvanized Fittings conform to ASTM A153

Malleable Fitting Dimensions conform to ASME B16.3

Malleable Bushings, Plugs and Locknuts conform to ASME B16.14

Malleable Unions conform to ASME B16.39

NPT Threads on all fittings conform to ASME B1.20.1

Class 150 fittings are UL listed and FM approved at 300psi.

Class 300 fittings are UL listed.

Manufacturing Facility is ISO Certified

\*Galvanized Fittings are approved to ANSI/NSF 61-4 Annex G and CA AB1953 (<0.25%Lead)

Country of origin covered is Thailand & China

YOU CAN TRUST BFO TO KEEP YOUR OPERATION FLOWING SMOOTHLY

BUYFITTINGSONLINE.COM | 1.800.569.0810 | BFO@QMCTECHNOLOGIES.COM