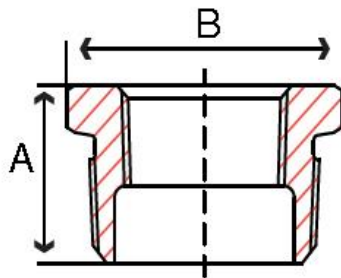


Bronze Hex Bushings – 125#

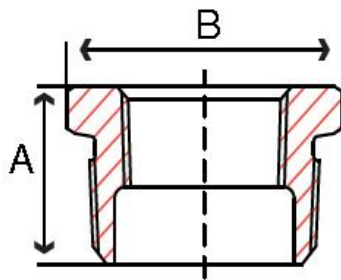
Bronze threaded pipe fittings are manufactured from smooth-cored castings, designed to provide full flow with minimum restriction. All threads are accurately machined and gauged to ensure a perfect fit with the pipe. All fittings are individually tested under water to ensure quality. Bronze provides a tighter seal and is easier to install than other metals. Can be used for water, plumbing, heating, pneumatic and marine applications, underground water service and able to resist the harmful effects of corrosion when coming into contact with salt water or fresh water polluted with mineral acids or peaty soils.

- Fittings conform to AWWA C800
- Castings conform to ASTM B62, UNS Alloy C83600
- Fitting dimensions conform to ASME B16.15
- NPT threads on all fittings conform to ASME B1.20.1
- UL Listed
- 100% air tested
- Manufacturing facilities are ISO 9001:2008
- Independent lab verification of applicable chemical & physical properties
- Class 125 Pipe Fittings - for steam, water, gas, oil and air service

**Connection: Male NPT x Female NPT Thread
Classification: 125# Bronze Cast Pipe Fitting**



Size in	Part Number	A in	B in	Hex	Weight lb
1/4 x 1/8	BF36HB1002001C	0.65	0.66	Out	0.02
3/8 x 1/8	BF36HB1003001C	0.70	0.70	Out	0.05
3/8 x 1/4	BF36HB1003002C	0.70	0.73	Out	0.04
1/2 x 1/8	BF36HB1004001C	0.81	0.90	Out	0.10
1/2 x 1/4	BF36HB1004002C	0.81	0.90	Out	0.09
1/2 x 3/8	BF36HB1004003C	0.81	0.90	Out	0.07
3/4 x 1/8	BF36HB1006001C	0.88	1.18	Out	0.1
3/4 x 1/4	BF36HB1006002C	0.93	1.18	Out	0.1
3/4 x 3/8	BF36HB1006003C	0.93	1.18	Out	0.1
3/4 x 1/2	BF36HB1006004C	0.93	1.18	Out	0.1
1 x 1/4	BF36HB1010002C	1.13	1.12	In	0.2
1 x 3/8	BF36HB1010003C	1.13	1.12	In	0.2
1 x 1/2	BF36HB1010004C	1.10	1.44	Out	0.2
1 x 3/4	BF36HB1010006C	1.10	1.44	Out	0.2
1-1/4 x 1/2	BF36HB1012004C	1.18	1.80	In	0.3
1-1/4 x 3/4	BF36HB1012006C	1.18	1.80	Out	0.4



Size in	Part Number	A in	B in	Hex	Weight lb
1-1/4 x 1	BF36HB1012010C	1.18	1.80	Out	0.3
1-1/2 x 1/4	BF36HB1014002C	1.27	1.15	In	0.4
1-1/2 x 3/8	BF36HB1014003C	1.30	1.34	Out	0.4
1-1/2 x 1/2	BF36HB1014004C	1.27	1.34	In	0.4
1-1/2 x 3/4	BF36HB1014006C	1.27	1.63	In	0.4
1-1/2 x 1	BF36HB1014010C	1.19	2.04	Out	0.5
1-1/2 x 1-1/4	BF36HB1014012C	1.19	2.04	Out	0.4
2 x 1/2	BF36HB1020004C	1.35	1.36	In	0.6
2 x 3/4	BF36HB1020006C	1.35	1.65	In	0.7
2 x 1	BF36HB1020010C	1.35	2.00	In	0.7
2 x 1-1/4	BF36HB1020012C	1.35	2.50	Out	0.8
2 x 1-1/2	BF36HB1020014C	1.35	2.55	Out	0.8
2-1/2 x 1/2	BF36HB1024004C	1.64	3.15	Out	1.2
2-1/2 x 3/4	BF36HB1024006C	1.58	1.65	In	1.1
2-1/2 x 1	BF36HB1024010C	1.58	2.00	In	1.1
2-1/2 x 1-1/4	BF36HB1024012C	1.60	2.39	In	1.2
2-1/2 x 1-1/2	BF36HB1024014C	1.52	2.70	In	1.3
2-1/2 x 2	BF36HB1024020C	1.62	3.15	Out	1.1
3 x 1/2	BF36HB1030004C	1.60	1.35	In	1.9
3 x 3/4	BF36HB1030006C	1.70	1.65	In	1.9
3 x 1	BF36HB1030010C	1.60	2.00	In	1.6
3 x 1-1/4	BF36HB1030012C	1.70	2.40	In	1.7
3 x 1-1/2	BF36HB1030014C	1.70	2.70	In	1.8
3 x 2	BF36HB1030020C	1.70	3.55	Out	2.3
3 x 2-1/2	BF36HB1030024C	1.70	3.90	Out	2.1
4 x 1-1/2	BF36HB1040014C	1.80	2.70	In	3.4
4 x 2	BF36HB1040020C	1.80	3.30	In	3.6
4 x 2-1/2	BF36HB1040024C	2.10	4.75	Out	3.9
4 x 3	BF36HB1040030C	2.10	4.75	Out	4.2

All dimensions are for reference only and subject to change at any time.

We can provide quotes for all items listed in this catalog offering.