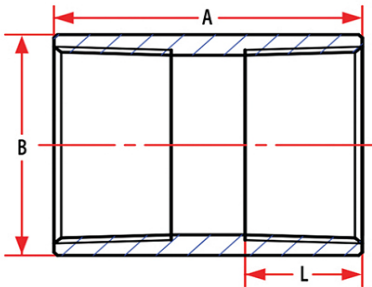


MSS SP-114 HEAVY PATTERN STAINLESS STEEL PIPE FITTINGS FULL COUPLINGS



304 SS	316 SS	Size	Weight (LBS)	A	B	L
SS304-64001	SS316-64001	1/8"	0.0476	0.95	0.59	0.25
SS304-64002	SS316-64002	1/4"	0.0772	1.08	0.72	0.32
SS304-64003	SS316-64003	3/8"	0.0882	1.11	0.86	0.37
SS304-64004	SS316-64004	1/2"	0.1389	1.38	1.02	0.42
SS304-64006	SS316-64006	3/4"	0.2584	1.60	1.29	0.50
SS304-64010	SS316-64010	1"	0.4167	1.78	1.59	0.58
SS304-64012	SS316-64012	1 1/4"	0.5489	1.99	1.91	0.66
SS304-64014	SS316-64014	1 1/2"	0.8300	2.15	2.22	0.69
SS304-64020	SS316-64020	2"	1.2610	2.40	2.73	0.74
SS304-64024	SS316-64024	2 1/2"	1.4771	2.74	3.17	0.89
SS304-64030	SS316-64030	3"	2.1050	3.02	4.00	0.94
SS304-64040	SS316-64040	4"	3.2849	3.52	4.83	1.05

MSS SP-114 HEAVY PATTERN STAINLESS STEEL PIPE FITTINGS

Stainless steel MSS-SP114 heavy pattern fittings are investment castings.
Available in a full range from 1/8" to 4" in both 304 and 316 grades of stainless steel.

All fittings are threaded to NPT standard in compliance to ASME B1.20.

Castings are made in accordance to ASTM 351 and heat treated and tested in accordance to ASTM A262

KEEP YOUR OPERATION FLOWING SMOOTHLY WITH BFO

BUYFITTINGSONLINE.COM | 1.800.569.0810 | BFO@QMCTECHNOLOGIES.COM