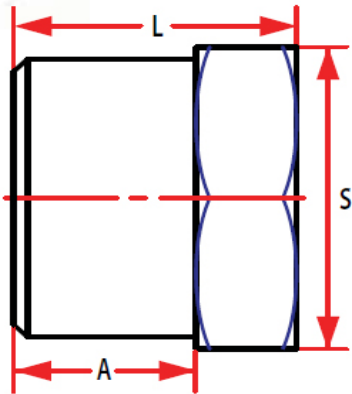


# MSS SP-114 HEAVY PATTERN STAINLESS STEEL PIPE FITTINGS HEX HEAD PLUGS



Size	Weight (LBS)	A	L	S
1/8"	0.02	0.36	0.49	0.48
1/4"	0.03	0.42	0.56	0.59
3/8"	0.06	0.46	0.61	0.69
1/2"	0.07	0.54	0.72	0.83
3/4"	0.12	0.60	0.81	1.15
1"	0.21	0.72	0.96	1.36
1-1/4"	0.32	0.76	1.03	1.69
1-1/2"	0.43	0.79	1.09	1.90
2"	0.68	0.84	1.16	2.40
2-1/2"	1.12	1.02	1.37	2.90
3"	1.83	1.08	1.46	3.67
4"	3.11	1.17	1.64	4.54

## MSS SP-114 HEAVY PATTERN STAINLESS STEEL PIPE FITTINGS

Stainless steel MSS-SP114 heavy pattern fittings are investment castings.

Available in a full range from 1/8" to 4" in both 304 and 316 grades of stainless steel.

All fittings are threaded to NPT standard in compliance to ASME B1.20.

Castings are made in accordance to ASTM 351 and heat treated and tested in accordance to ASTM A262

KEEP YOUR OPERATION FLOWING SMOOTHLY WITH BFO

BUYFITTINGSONLINE.COM | 1.800.569.0810 | BFO@QMCTECHNOLOGIES.COM