




Cast Iron Threaded Fittings

Specifications

-  branded cast iron threaded fittings are UL Listed and FM Approved at 300psi
- Rated to 125# WSP
- Casting date on each fitting
- Grey iron castings conform to ASTM A126
- Cast iron fitting dimensions conform to ASME B16.4 Class 125
- NPT threads on fittings conform to ASME B1.20.1
- Cast iron fittings have SCI Trademark and are 100% air tested
- Manufacturing facility is ISO 9001:2008 and ISO 14001



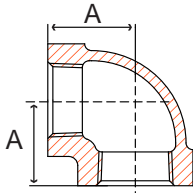


Fig. 37E 1 – 90° Elbow

Size IN	Part Number	A IN	Packing		Weight LB
			Inner	Master	
1/2	37E 1004	1.13	90	180	0.3
3/4	37E 1006	1.31	50	100	0.5
1	37E 1010	1.50	35	70	0.8
1-1/4	37E 1012	1.75	20	40	1.3
1-1/2	37E 1014	1.94	15	30	1.7
2	37E 1020	2.25	7	14	2.7
2-1/2	37E 1024	2.70	4	8	4.3

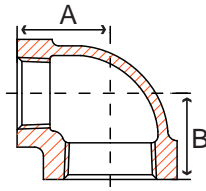


Fig. 37RE1 – 90° Reducing Elbow

Size IN	Part Number	A IN	B IN	Packing		Weight LB
				Inner	Master	
1 x 1/2	37RE1010004	1.36	1.26	50	100	0.5
1 x 3/4	37RE1010006	1.45	1.38	40	80	0.7
1-1/4 x 1/2	37RE1012004	1.53	1.34	32	64	0.8
1-1/4 x 3/4	37RE1012006	1.63	1.45	28	56	0.9
1-1/4 x 1	37RE1012010	1.67	1.58	25	50	1.0
1-1/2 x 1/2	37RE1014004	1.75	1.52	25	50	1.0
1-1/2 x 3/4	37RE1014006	1.75	1.52	20	40	1.1
1-1/2 x 1	37RE1014010	1.80	1.65	18	36	1.3
1-1/2 x 1-1/4	37RE1014012	1.88	1.82	14	28	1.5
2 x 1/2	37RE1020004	1.97	1.60	15	30	1.4
2 x 3/4	37RE1020006	1.97	1.60	15	30	1.6
2 x 1	37RE1020010	2.02	1.73	12	24	1.8
2 x 1-1/2	37RE1020014	2.16	2.02	10	20	2.3

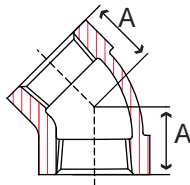


Fig. 37F 1 – 45° Elbow

Size IN	Part Number	A IN	Packing		Weight LB
			Inner	Master	
1	37F 1010	1.26	40	80	0.7
1-1/4	37F 1012	1.29	22	44	1.2
1-1/2	37F 1014	1.44	16	32	1.5
2	37F 1020	1.69	8	16	2.6

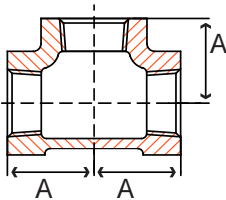


Fig. 37T 1 – Tee

Size IN	Part Number	A IN	Packing		Weight LB
			Inner	Master	
1/2	37T 1004	1.13	60	120	0.4
3/4	37T 1006	1.31	30	60	0.7
1	37T 1010	1.50	20	40	1.1
1-1/4	37T 1012	1.75	12	24	1.8
1-1/2	37T 1014	1.94	8	16	2.4
2	37T 1020	2.25	5	10	3.8

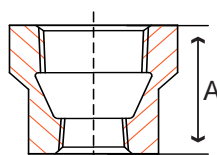


Fig. 37RC1 – Hex Coupling

Size IN	Part Number	A IN	Packing		Weight LB
			Inner	Master	
1 x 1/2	37RC1010004	1.69	60	120	0.5
1 x 3/4	37RC1010006	1.69	50	100	0.6
2 x 1 (not hex)	37RC1020010	2.81	16	32	1.5

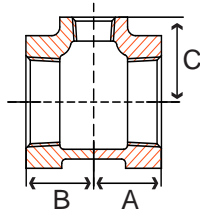


Fig. 37RT1 – Reducing Tee

Size IN	Part Number	A IN	B IN	C IN	Packing		Weight LB
					Inner	Master	
1 x 1/2	37RT1010004	1.26	1.26	1.36	25	50	0.9
1 x 1/2 x 1	37RT1010004010	1.50	1.36	1.50	24	48	0.9
1 x 3/4	37RT1010006	1.38	1.38	1.45	22	44	1.0
1 x 3/4 x 1	37RT1010006010	1.50	1.45	1.50	20	40	1.0
1 x 1-1/4	37RT1010012	1.67	1.67	1.58	15	30	1.4
1-1/4 x 1/2	37RT1012004	1.34	1.34	1.53	18	36	1.3
1-1/4 x 1/2 x 1-1/4	37RT1012004012	1.75	1.53	1.75	18	36	1.4
1-1/4 x 3/4	37RT1012006	1.45	1.45	1.62	15	30	1.4
1-1/4 x 3/4 x 1-1/4	37RT1012006012	1.75	1.62	1.75	15	30	1.5
1-1/4 x 1	37RT1012010	1.58	1.58	1.67	15	30	1.6
1-1/4 x 1 x 1/2	37RT1012010004	1.34	1.26	1.53	20	40	1.1
1-1/4 x 1 x 3/4	37RT1012010006	1.45	1.38	1.63	16	32	1.2
1-1/4 x 1 x 1	37RT1012010010	1.58	1.50	1.69	15	30	1.4
1-1/4 x 1 x 1-1/4	37RT1012010012	1.75	1.69	1.75	12	24	1.6
1-1/4 x 1 x 1-1/2	37RT1012010014	1.88	1.80	1.82	12	24	1.8
1-1/4 x 1-1/2	37RT1012014	1.88	1.88	1.82	10	20	2.0
1-1/2 x 1/2	37RT1014004	1.41	1.41	1.66	12	24	1.6
1-1/2 x 1/2 x 1-1/4	37RT1014004012	1.81	1.56	1.88	12	24	1.7
1-1/2 x 1/2 x 1-1/2	37RT1014004014	1.94	1.66	1.94	12	24	1.8
1-1/2 x 3/4	37RT1014006	1.52	1.52	1.75	12	24	1.8
1-1/2 x 3/4 x 1-1/4	37RT1014006012	1.94	1.66	1.88	12	24	1.7
1-1/2 x 3/4 x 1-1/2	37RT1014006014	1.94	1.75	1.94	12	24	1.9
1-1/2 x 1	37RT1014010	1.65	1.65	1.80	10	20	1.9
1-1/2 x 1 x 1/2	37RT1014010004	1.44	1.25	1.69	18	36	1.3
1-1/2 x 1 x 3/4	37RT1014010006	1.50	1.44	1.75	15	30	1.4
1-1/2 x 1 x 1	37RT1014010010	1.65	1.50	1.80	12	24	1.6
1-1/2 x 1 x 1-1/4	37RT1014010012	1.82	1.67	1.88	10	20	1.8
1-1/2 x 1 x 1-1/2	37RT1014010014	1.94	1.80	1.94	8	16	2.1
1-1/2 x 1-1/4	37RT1014012	1.82	1.82	1.88	8	16	2.2
1-1/2 x 1-1/4 x 1/2	37RT1014012004	1.41	1.34	1.66	15	30	1.5
1-1/2 x 1-1/4 x 3/4	37RT1014012006	1.52	1.45	1.75	12	24	1.6
1-1/2 x 1-1/4 x 1	37RT1014012010	1.65	1.58	1.80	12	24	1.8
1-1/2 x 1-1/4 x 1-1/4	37RT1014012012	1.82	1.75	1.88	10	20	2.1
1-1/2 x 1-1/4 x 1-1/2	37RT1014012014	1.94	1.88	1.94	8	16	2.3
1-1/2 x 1-1/4 x 2	37RT1014012020	2.16	2.10	2.02	6	12	2.7
1-1/2 x 2	37RT1014020	2.16	2.16	2.02	5	10	2.9
2 x 1/2	37RT1020004	1.49	1.49	1.88	8	16	2.6
2 x 3/4	37RT1020006	1.60	1.60	1.97	8	16	2.6
2 x 1	37RT1020010	1.73	1.73	2.02	6	12	2.9
2 x 1 x 2	37RT1020010020	2.25	2.02	2.25	5	10	3.1
2 x 1-1/4	37RT1020012	1.90	1.90	2.10	5	10	3.2
2 x 1-1/4 x 2	37RT1020012020	2.25	2.10	2.25	5	10	3.2
2 x 1-1/2	37RT1020014	2.02	2.02	2.16	5	10	3.3
2 x 1-1/2 x 1/2	37RT1020014004	1.49	1.41	1.88	8	16	2.1
2 x 1-1/2 x 3/4	37RT1020014006	1.60	1.52	1.97	8	16	2.2
2 x 1-1/2 x 1	37RT1020014010	1.73	1.65	2.02	8	16	2.4
2 x 1-1/2 x 1-1/4	37RT1020014012	1.90	1.82	2.10	7	14	2.7
2 x 1-1/2 x 1-1/2	37RT1020014014	2.02	1.94	2.16	7	14	2.9
2 x 1-1/2 x 2	37RT1020014020	2.25	2.16	2.25	5	10	3.4
2 x 2-1/2	37RT1020024	2.60	2.60	2.39	3	6	4.6