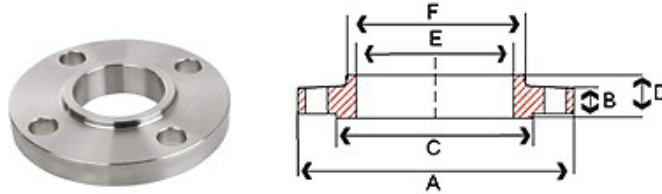


304/304L & 316/316L STAINLESS STEEL - ANSI RAISED FACE (RF) SLIP ON FLANGES:

- Forged stainless steel material conforms to ASME A182
- Forged stainless steel flange dimensions conform to ASME B16.5
- NPT threads conform to ASME B1.20.1
- Manufacturing facility is ISO 9001:2008
- MTRS and COCs are available upon order

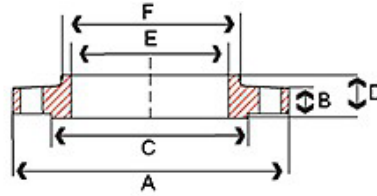


150# Slip On Flanges – Stainless Steel 304/304L & 316/316L – Raised Face 1/16"

Size IN	A IN	B IN	C IN	D IN	E IN	F IN	Bolt Circle IN	Bolt Hole Diameter IN	Number of Bolt Holes	Weight lbs
1/2	3.50	0.44	1.38	0.62	0.88	1.19	2.38	0.62	4	1
3/4	3.88	0.50	1.69	0.62	1.09	1.50	2.75	0.62	4	2
1	4.25	0.56	2.00	0.69	1.36	1.94	3.12	0.62	4	2
1-1/4	4.62	0.62	2.50	0.81	1.70	2.31	3.50	0.62	4	3
1-1/2	5.00	0.69	2.88	0.88	1.95	2.56	3.88	0.62	4	3
2	6.00	0.75	3.62	1.00	2.44	3.06	4.75	0.75	4	5
2-1/2	7.00	0.88	4.12	1.12	2.94	3.56	5.50	0.75	4	7
3	7.50	0.94	5.00	1.19	3.57	4.25	6.00	0.75	4	8
4	9.00	0.94	6.19	1.31	4.60	5.31	7.50	0.75	8	13
5	10.00	0.94	7.31	1.44	5.66	6.44	8.50	0.88	8	15
6	11.00	1.00	8.50	1.56	6.72	7.56	9.50	0.88	8	19
8	13.50	1.12	10.62	1.75	8.72	9.69	11.75	0.88	8	30
10	16.00	1.19	12.75	1.94	10.88	12.00	14.25	1.00	12	43
12	19.00	1.25	15.00	2.19	12.88	14.38	17.00	1.00	12	64

300# Slip On Flanges – Stainless Steel 304/304L & 316/316L – Raised Face 1/16"

Size IN	A IN	B IN	C IN	D IN	E IN	F IN	Bolt Circle IN	Bolt Hole Diameter IN	Number of Bolt Holes	Weight lbs
1/2	3.75	0.56	1.38	0.88	0.88	1.50	2.62	0.62	4	2
3/4	4.62	0.62	1.69	1.00	1.09	1.88	3.25	0.75	4	3
1	4.88	0.69	2.00	1.06	1.36	2.12	3.50	0.75	4	3
1-1/4	5.25	0.75	2.50	1.06	1.70	2.50	3.88	0.75	4	4
1-1/2	6.12	0.81	2.88	1.19	1.95	2.75	4.50	0.88	4	6
2	6.50	0.88	3.62	1.31	2.44	3.31	5.00	0.75	4	7
2-1/2	7.50	1.00	4.12	1.50	2.94	3.94	5.88	0.88	4	10
3	8.25	1.12	5.00	1.69	3.57	4.62	6.62	0.88	4	13
4	10.00	1.25	6.19	1.88	4.60	5.75	7.88	0.88	8	22
6	12.50	1.44	8.50	2.06	6.72	8.12	10.62	0.88	8	39
8	15.00	1.62	10.62	2.44	8.72	10.25	13.00	1.00	8	58
10	17.50	1.88	12.75	2.62	10.88	12.62	15.25	1.12	12	81
12	20.50	2.00	15.00	2.88	12.88	14.75	17.75	1.25	12	115



600# Slip On Flanges – Stainless Steel 304/304L & 316/316L – Raised Face 1/16"

Size IN	A IN	B IN	C IN	D IN	E IN	F IN	Bolt Circle IN	Bolt Hole Diameter IN	Number of Bolt Holes	Weight lbs
1/2	3.75	0.56	1.38	0.88	0.88	1.50	2.62	0.62	4	1
3/4	4.62	0.62	1.69	1.00	1.09	1.88	3.25	0.75	4	2
1	4.88	0.69	2.00	1.06	1.36	2.12	3.50	0.75	4	2
1-1/4	5.25	0.81	2.50	1.12	1.70	2.50	3.88	0.75	4	3
1-1/2	6.12	0.88	2.88	1.25	1.95	2.75	4.50	0.88	4	3
2	6.50	1.00	3.62	1.44	2.44	3.31	5.00	0.75	8	5
3	8.25	1.25	5.00	1.81	3.57	4.62	6.62	0.88	8	8
4	10.00	1.50	6.19	2.12	4.60	0.94	8.50	1.00	8	13
6	12.50	1.88	8.50	2.62	6.72	1.06	11.50	1.12	12	19