

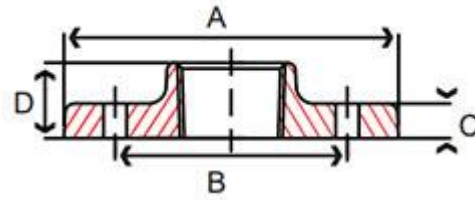
Ductile Iron Flanges Class 150 & 300 Specifications

Applications: Waterworks, Pump, Irrigation

These flanges are not UL Listed or FM Approved

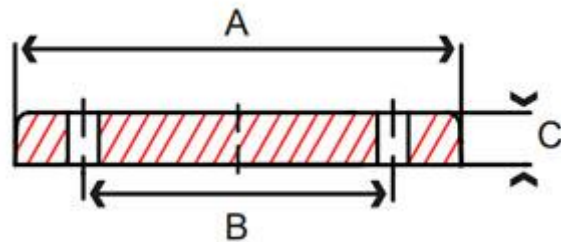
- Ductile iron conforms to ASTM A536
- Flange dimensions, drilling and materials in accordance with AWWA C110 / ASME B16.42
- Hot-dipped galvanized flanges conform to ASTM A153
- Companion flange threads conform to ASME B1.20.1
- Manufacturing facility is ISO 9001:2008
- These flanges are not UL Listed or FM Approved





150# Ductile Iron - Threaded Companion Pipe Flanges

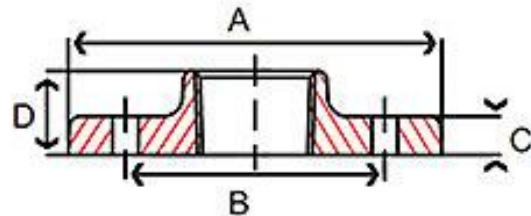
Size in	Part Number		A in	B in	C in	D in	Bolt Hole Size	# Bolt Holes	Weight lb
	Black	Galvanized							
1/2	BFO17TH1004	BFO18TH1004	3.50	2.38	0.50	0.75	5/8	4	1
3/4	BFO17TH1006	BFO18TH1006	3.89	2.75	0.50	0.75	5/8	4	1
1	BFO17TH1010	BFO18TH1010	4.25	3.12	0.44	0.75	5/8	4	1
1-1/4	BFO17TH1012	BFO18TH1012	4.62	3.50	0.50	0.81	5/8	4	2
1-1/2	BFO17TH1014	BFO18TH1014	5.00	3.88	0.56	0.88	5/8	4	3
2	BFO17TH1020	BFO18TH1020	6.00	4.75	0.62	1.00	3/4	4	4
2-1/2	BFO17TH1024	BFO18TH1024	7.00	5.50	0.69	1.12	3/4	4	6
3	BFO17TH1030	BFO18TH1030	7.50	6.00	0.75	1.19	3/4	4	8
4	BFO17TH1040	BFO18TH1040	9.00	7.50	0.94	1.31	3/4	8	12
5	BFO17TH1050	BFO18TH1050	10.00	8.50	0.94	1.44	7/8	8	14
6	BFO17TH1060	BFO18TH1060	11.00	9.50	1.00	1.56	7/8	8	16
8	BFO17TH1080	BFO18TH1080	13.50	11.75	1.12	1.75	7/8	8	28
10	BFO17TH1100	BFO18TH1100	16.00	14.25	1.19	1.94	1	12	38
12	BFO17TH1120	BFO18TH1120	19.00	17.00	1.25	2.19	1	12	55



150# Ductile Iron - Blind Pipe Flanges

Size in	Part Number		A in	B in	C in	Bolt Hole Size	# Bolt Holes	Weight lb
	Black	Galvanized						
1	BFO17BL1010	-	4.25	3.12	0.44	5/8	4	2
1-1/4	BFO17BL1012	BFO18BL1012	4.62	3.50	0.50	5/8	4	2
1-1/2	BFO17BL1014	-	5.00	3.88	0.56	5/8	4	4
2	BFO17BL1020	BFO18BL1020	6.00	4.75	0.62	3/4	4	5
2-1/2	BFO17BL1024	BFO18BL1024	7.00	5.50	0.69	3/4	4	7

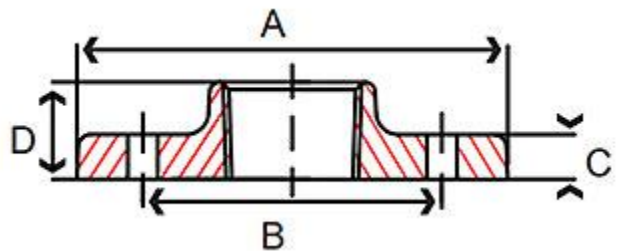
Size in	Part Number		A in	B in	C in	Bolt Hole Size	# Bolt Holes	Weight lb
	Black	Galvanized						
3	BFO17BL1030	BFO18BL1030	7.50	6.00	0.75	3/4	4	9
3-1/2	BFO17BL1034	BFO18BL1034	8.50	7.00	0.81	3/4	8	14
4	BFO17BL1040	BFO18BL1040	9.00	7.50	0.94	3/4	8	15
5	BFO17BL1050	BFO18BL1050	10.00	8.50	0.94	7/8	8	18
6	BFO17BL1060	BFO18BL1060	11.00	9.50	1.00	7/8	8	23
8	BFO17BL1080	BFO18BL1080	13.50	11.75	1.12	7/8	8	37
10	BFO17BL1100	BFO18BL1100	16.00	14.25	1.19	1	12	59
12	BFO17BL1120	BFO18BL1120	19.00	17.00	1.25	1	12	89
14	BFO17BL1140	-	21.00	18.75	1.38	1-1/8	12	101
16	BFO17BL1160	-	23.50	21.25	1.44	1-1/8	16	152
18	BFO17BL1180	-	25.00	22.75	1.56	1-1/4	16	172
20	BFO17BL1200	-	27.50	25.00	1.69	1-1/4	20	226
24	BFO17BL1240	-	32.00	29.50	1.88	1-3/8	20	355



150# Ductile Iron – Reducing Companion Flanges

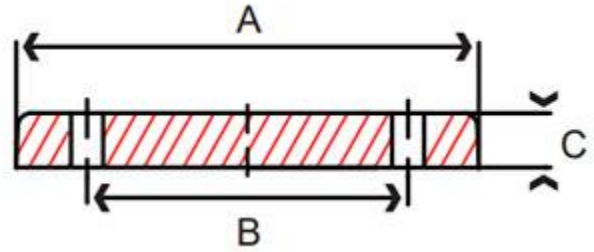
Size in	Nominal Flange Size in	Flange OD in	Part Number		A in	B in	C in	D in	Bolt Hole Size	# Bolt Holes	Weight lb
			Black	Galvanized							
1 x 4-5/8	1-1/4"	4-5/8"	BFO17RT1010045	-	4.62	3.5	0.5	0.81	5/8	4	3
1 x 5	1-1/2"	5"	BFO17RT1010050	-	5	3.88	0.56	0.88	5/8	4	3
1 x 7	2"	6"	BFO17RT1010070	-	7	5.5	0.69	1.12	3/4	4	7
1-1/4 x 6	2"	6"	BFO17RT1012060	-	6	6	0.75	1	3/4	4	4
1-1/2 x 6	2-1/2"	7"	BFO17RT1014060	BFO18RT1014060	6	6	0.75	1	3/4	4	4
1-1/2 x 7	3"	7-1/2"	BFO17RT1014070	BFO18RT1014070	7	5.5	0.69	1.12	3/4	4	6
1-1/2 x 7-1/2	4"	9"	BFO17RT1014074	-	7.5	6	0.75	1.19	3/4	4	9
1-1/2 x 9	5"	10"	BFO17RT1014090	-	9	7.5	0.94	1.31	3/4	8	15
1-1/2 x 10	6"	11"	BFO17RT1014100	-	10	8.5	0.94	1.44	7/8	8	19
1-1/2 x 11	2-1/2"	7"	BFO17RT1014110	-	11	9.5	1	1.56	7/8	8	24
2 x 7	3"	7-1/2"	BFO17RT1020070	BFO18RT1020070	7	5.5	0.69	1.12	3/4	4	7
2 x 7-1/2	4"	9"	BFO17RT1020074	BFO18RT1020074	7.5	6	0.75	1.19	3/4	4	8

Size in	Nominal Flange Size in	Flange OD in	Part Number		A in	B in	C in	D in	Bolt Hole Size	# Bolt Holes	Weight lb
			Black	Galvanized							
2 x 9	5"	10"	BFO17RT1020090	BFO18RT1020090	9	7.5	0.94	1.31	3/4	8	16
2 x 10	6"	11"	BFO17RT1020100	-	10	8.5	0.94	1.44	7/8	8	17
2 x 11	8"	13-1/2"	BFO17RT1020110	BFO18RT1020110	11	9.5	1	1.56	7/8	8	23
2 x 13-1/2	10"	16"	BFO17RT1020134	-	13.5	11.75	1.12	1.75	7/8	8	44
2 x 16	12"	19"	BFO17RT1020160	-	16	14.25	1.19	1.94	1	12	60
2 x 19	3"	7-1/2"	BFO17RT1020190	-	19	17	1.25	2.19	1	12	87
2-1/2 x 7-1/2	4"	9"	BFO17RT1024074	BFO18RT1024074	7.5	6	0.75	1.19	3/4	4	8
2-1/2 x 9	5"	10"	BFO17RT1024090	BFO18RT1024090	9	7.5	0.94	1.31	3/4	8	13
2-1/2 x 10	6"	11"	BFO17RT1024100	-	10	8.5	0.94	1.44	7/8	8	18
2-1/2 x 11	8"	13-1/2"	BFO17RT1024110	BFO18RT1024110	11	9.5	1	1.56	7/8	8	22
2-1/2 x 13-1/2	4"	9"	BFO17RT1024134	-	13.5	11.75	1.12	1.75	7/8	8	40
3 x 9	5"	10"	BFO17RT1030090	BFO18RT1030090	9	7.5	0.94	1.31	3/4	8	13
3 x 10	6"	11"	BFO17RT1030100	-	10	8.5	0.94	1.44	7/8	8	17
3 x 11	8"	13-1/2"	BFO17RT1030110	-	11	9.5	1	1.56	7/8	8	21
3 x 13-1/2	6"	11"	BFO17RT1030134	-	13.5	11.75	1.12	1.75	7/8	8	37
3-1/2 x 13-1/2	8"	13-1/2"	BFO17RT1034134	-	13.5	11.75	1.12	1.75	7/8	8	39
4 x 10	5"	10"	BFO17RT1040100	BFO18RT1040100	10	8.5	0.94	1.44	7/8	8	14
4 x 11	6"	11"	BFO17RT1040110	BFO18RT1040110	11	9.5	1	1.56	7/8	8	21
4 x 13-1/2	8"	13-1/2"	BFO17RT1040134	BFO18RT1040134	13.5	11.75	1.12	1.75	7/8	8	35
5 x 11	6"	11"	BFO17RT1050110	BFO18RT1050110	11	9.5	1	1.56	7/8	8	20
5 x 13-1/2	8"	13-1/2"	BFO17RT1050134	-	13.5	11.75	1.12	1.75	7/8	8	32
6 x 13-1/2	8"	13-1/2"	BFO17RT1060134	BFO18RT1060134	13.5	11.75	1.12	1.75	7/8	8	30
6 x 16	10"	16"	BFO17RT1060160	-	16	14.25	1.19	1.94	1	12	55
8 x 16	10"	16"	BFO17RT1080160	-	16	14.25	1.19	1.94	1	12	45



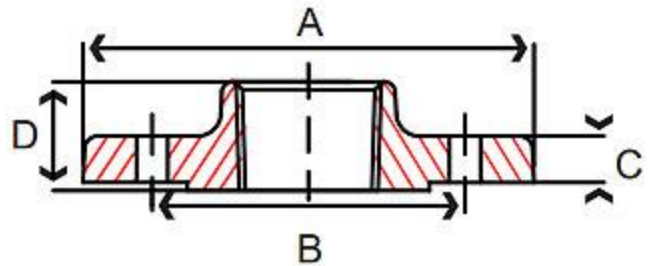
150# Ductile Iron – Threaded Hydrant Flanges

Size in	Part Number Black	A in	B in	C in	D in	Bolt Hole Size	# Bolt Holes	Weight lb
6	BFO17HF1060	11.00	9.50	1.00	1.56	7/8	6	16



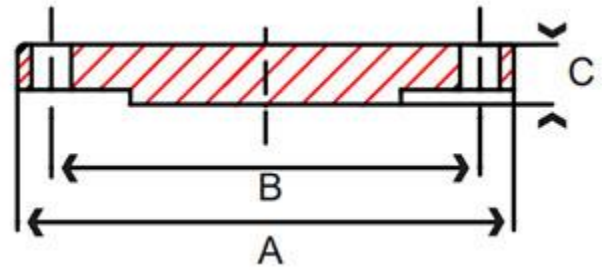
150# Ductile Iron – Blind Hydrant Flange

Size in	Part Number Black	A in	B in	C in	Bolt Hole Size	# Bolt Holes	Weight lb
6	BFO17HB1060	11	9.5	1	7/8	6	26



300# Ductile Iron – Threaded Companion Flange

Size in	Part Number		A in	B in	C in	D in	Bolt Hole Size	Number of Bolt Holes	Weight lb
	Black	Galvanized							
2	BFO17TH2020	18TH2020	6.5	5	0.88	1.25	3/4	8	7
2-1/2	BFO17TH2024	18TH2024	7.5	5.88	1	1.43	3/4	8	10
3	BFO17TH2030	18TH2030	8.25	6.62	1.12	1.56	3/4	8	14
4	BFO17TH2040	18TH2040	10	7.88	1.25	1.75	3/4	8	24
6	BFO17TH2060	-	12.5	10.6	1.44	1.94	7/8	12	39
8	BFO17TH2080	-	15	13	1.62	2.19	1	12	58



300# Ductile Iron – Blind Flange

Size in	Part Number Black	A in	B in	C in	Bolt Hole Size	# Bolt Holes	Weight lb
2	BFO17BL2020	6.5	5	0.88	3/4	8	8
2-1/2	BFO17BL2024	7.5	5.88	1	7/8	8	12
3	BFO17BL2030	8.25	6.62	1.12	7/8	8	16
4	BFO17BL2040	10	7.88	1.25	7/8	8	27
5	BFO17BL2050	11	9.25	1.38	7/8	8	35
6	BFO17BL2060	12.5	10.6	1.44	7/8	12	50
8	BFO17BL2080	15	13	1.62	1	12	81
10	BFO17BL2100	17.5	15.25	1.88	1-1/8	16	115