



Valves, Automation & Controls

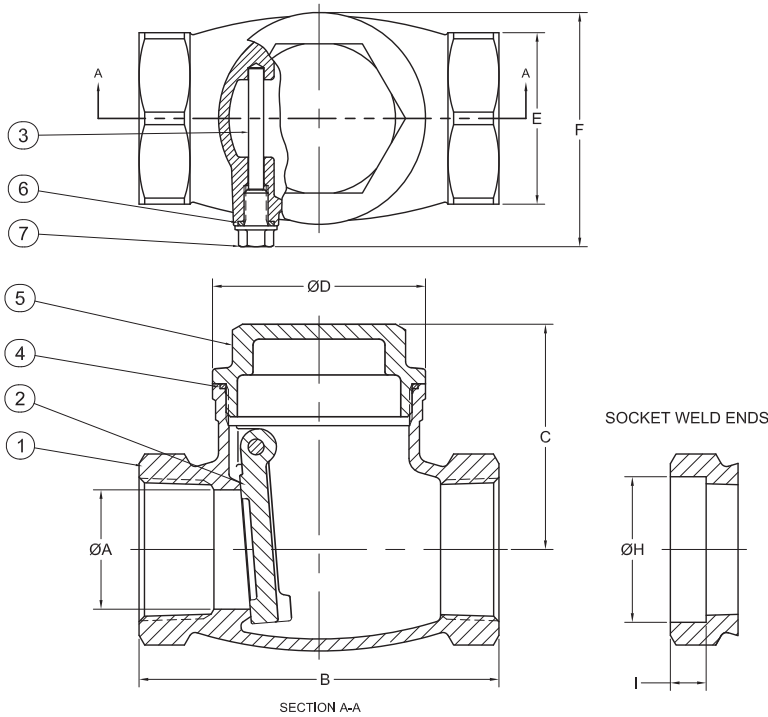
Series 20276
SWING CHECK VALVE

Design Features

- 200 WOG
- 316 stainless steel
- Threaded in cap
- Threaded or socket weld ends
- Hydrostatic shell test at 300 psi



Dimensions, Parts & Materials



No.	Part Name	Qty	Material
1	Body	1	CF8M
2	Disc	1	CF8M
3	Pin	1	316 Stainless Steel
4	Gasket	1	PTFE
5	Bonnet	1	CF8M
6	Seal	1	PTFE
7	Bolt	1	316 Stainless Steel

Dimensions (Inches)

Size	ØA	B	C	ØD	E	F	ØH	I
1/4	0.43	2.56	2	1.6	1.06	1.9	0.55	0.37
3/8	0.43	2.56	2	1.6	1.06	1.9	0.7	0.37
1/2	0.59	2.56	2	1.6	1.06	1.9	0.85	0.37
3/4	0.78	2.95	2.1	1.8	1.4	2.1	1.07	0.5
1	0.98	3.54	2.3	2.1	1.7	2.3	1.33	0.5
1-1/4	1.26	4.13	2.8	2.6	2	2.8	1.68	0.5
1-1/2	1.57	4.72	3	2.8	2.26	3.1	1.92	0.5
2	1.89	5.51	3.2	3.4	2.75	3.6	2.41	0.63
2-1/2	2.52	6.14	3.6	4.3	3.34	4.4	2.9	0.63
3	2.99	7.4	4	5	3.93	5	3.53	0.63

USA 800-766-0076

Fax 323-890-4456

www.smithcooper.com

www.sharpevalves.com

Los Angeles, CA

Chicago, IL

Atlanta, GA

Vancouver, WA

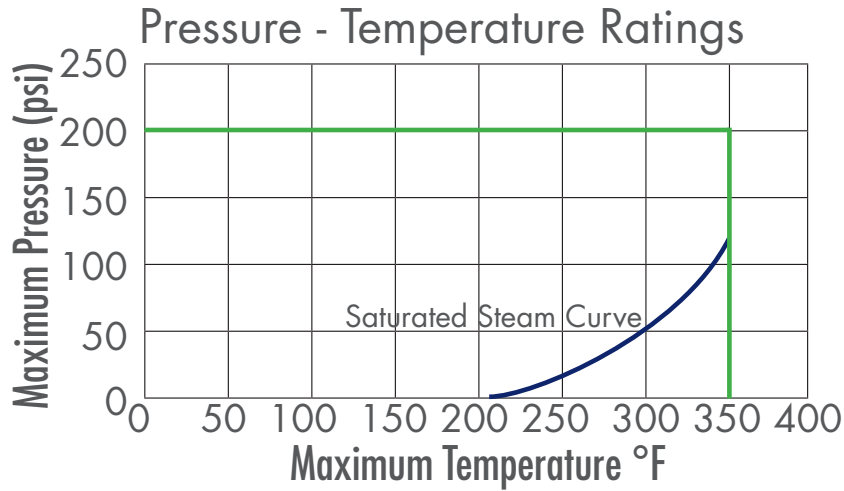
Houston, TX



Valves, Automation & Controls

Series 20276 SWING CHECK VALVE

Technical Information



How to Order

Size	Series	Ends	
1/4	20276	TE	Threaded
3/8		SW	Socket Weld
1/2			
3/4			
1			
1-1/4			
1-1/2			
2			
2-1/2			
3			

Example: 1 - 20276 - TE = 1-20276-TE

Due to continuous development of our product range, we reserve the right to change the dimensions and information for this product as required.