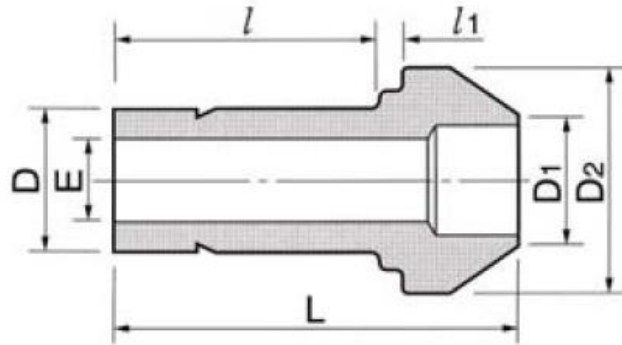
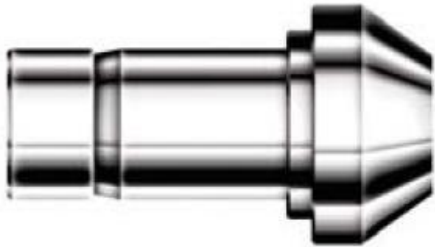


REDUCING PORT CONNECTORS RPC



Connects two fractional DKLOK ports
Classification: Tube to Tube Union Fitting

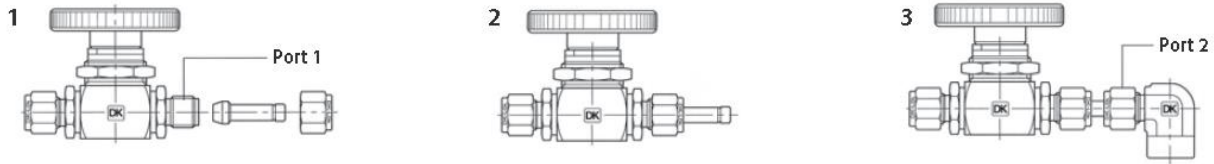
Part Number	Tube O.D.				E Min.	D2	l	l1	L
	D1		D						
	in.	mm	in.	mm					
30-RPC-1/8-1/16	1/8	3.17	1/16	1.59	1.00	6.10	8.64	2.03	17.27
30-RPC-1/4-1/8	1/4	6.35	1/8	3.17	2.28	9.39	13.45	3.30	22.60
30-RPC-3/8-1/8	3/8	9.52	1/8	3.17	2.28	12.70	13.45	3.81	23.11
30-RPC-3/8-1/4	3/8	9.52	1/4	6.35	4.82	12.70	15.75	3.30	24.89
30-RPC-1/2-1/4	1/2	12.70	1/4	6.35	4.82	15.74	15.75	3.81	29.21
30-RPC-1/2-3/8	1/2	12.70	3/8	9.52	7.11	15.74	17.67	3.30	30.48
30-RPC-3/4-1/2	3/4	19.05	1/2	12.70	9.90	22.09	23.20	3.81	37.85
30-RPC-1-1/2	1	25.40	1/2	12.70	9.90	28.40	24.47	4.82	42.67
30-RPC-1-3/4	1	25.40	3/4	19.05	14.98	28.40	25.90	4.06	43.43

All dimensions are in millimeters unless otherwise specified and only for reference and subject to change.

Installation Instructions

Machined Ferrule End and Tube Stub End

Port Connector is useful for close connection of two DK-Lok ports.



Be aware that Port Connector consists of machined ferrule end, and tube stub end. These two ends require different installation.

Machined Ferrule End

Refers to Fig. 1 & 2.

1. Remove the nut and ferrules from DK-Lok port 1.
2. Place the nut over the machined ferrule end of the port connector.
3. Finger-tighten the nut onto the port 1.
4. Wrench-tighten the nut 1/4 turn, keeping the body steady with a backup wrench.
 - Do not tighten 1 1/4 turns. This is not the standard ferrule.
 - Tightens 1/8 turn for 1/16, and 1/8 in.; 3, and 4mm Tube Fittings.

Tube Stub End

Refers to Fig. 3.

1. Insert the tube stub end into the port 2 until it is bottomed on the shoulder of the body.
2. Finger-tighten the nut on port 2.
3. Wrench-tighten the nut 1 1/4 turns, keeping the port 2 body steady with a backup wrench.
 - Tighten the nut 3/4 turn for 1/16, and 1/8 in.; and 3, and 4mm Tube Fittings.
 - For re-use, see re-assembly instruction.



Operating Pressures & Temperatures - Stainless Steel Compression Tubing

- Applications Include: Compression, Instrumentation, Vacuum, Gas, Cryogenic, High pressure & Temperature Service.
- These tube fittings are designed using industrial codes and specifications with additional cutting-edge engineering on swaging action and sealing integrity.
- They also provide excellent leak-free sealing on high pressure gas, vacuum, impulse, thermal shock, heavy vibration and many other stringent applications.
- All tube fittings are double ferrule and consist of a body, front ferrule, back ferrule and nut.
- Stainless steel bar stock conforms to ASTM A276, ASTM 479, ASME SA479 and JIS GA 303
- Stainless steel forged fittings conform to ASTM A182, ASME SA 182 and JIS G3214
- The pressure rating of a BFO Tube Fitting is rated to the [working pressure of the connective tubing](#).