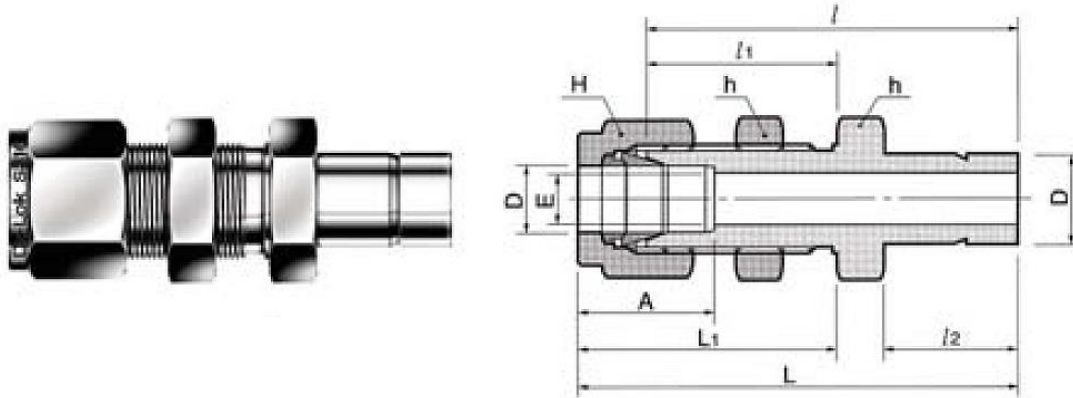


BULKHEAD ADAPTER BA



Connects fractional tube to fractional BFO-Lok port

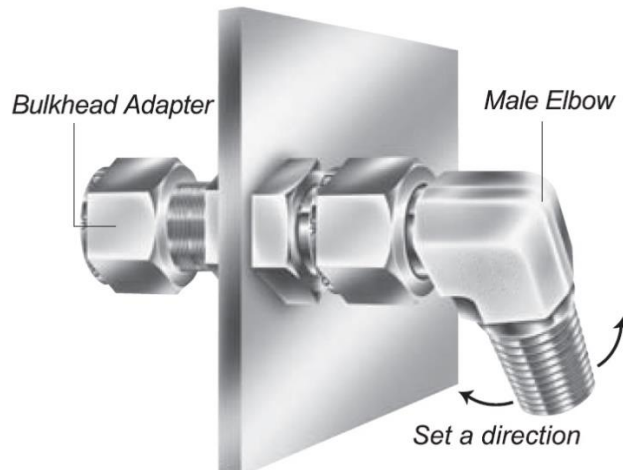
Classification: Tube Stub Connector

Ferrule System: Double Ferrule

Part No.	Tube O.D. (D)		E Min	Width Across Flat				A	l	h	l/2	L	L1	Panel Hole Drill Size	Panel Max Thick- ness
				h		H									
	in.	mm		in.	mm	in.	mm								
30-BA-1/8	1/8	3.17	2.03	1/2	12.70	7/16	11.11	12.70	42.92	24.63	13.45	49.53	31.24	8.33	12.70
30-BA-1/4	1/4	6.35	4.82	5/8	15.87	9/16	14.28	15.24	48.51	26.16	15.74	55.88	33.52	11.50	10.16
30-BA-3/8	3/8	9.52	7.11	3/4	19.05	11/16	17.46	16.76	53.84	29.46	17.50	61.21	36.83	14.68	11.17
30-BA-1/2	1/2	12.70	10.41	15/16	23.81	7/8	22.22	22.86	62.73	31.75	23.11	72.89	41.91	19.44	12.70
30-BA-5/8	5/8	15.87	12.70	1-1/16	26.98	1	25.40	24.38	65.02	32.51	24.70	75.18	42.67	22.62	12.70
30-BA-1	1	25.40	20.32	1-5/8	41.28	1-1/2	38.10	31.24	88.13	45.21	31.70	100.33	57.40	33.73	19.05
30-BA-1-1/4	1-1/4	31.75	27.68	1-7/8	47.63	1-7/8	47.63	41.14	102.07	47.75	40.00	124.17	69.85	41.67	19.05
30-BA-1-1/2	1-1/2	38.10	34.03	2-1/4	57.15	2-1/4	57.15	50.03	118.33	49.27	51.50	145.51	76.45	49.61	19.05
30-BA-2	2	50.80	45.97	2-3/4	69.85	3	76.20	67.56	148.79	56.38	68.40	185.82	93.71	57.94	19.05

All dimensions are in millimeters unless otherwise specified and only for reference and subject to change.
Request a quote for any sizes not listed online.

The bulkhead adapter is useful to help set a direction through panel construction.



ADDITIONAL TUBE COMPRESSION FITTING SPEC DATA

Tube stub connectors are designed to eliminate difficult alignment issues, reduce from or increase to one tube system size to another, convert between fractional and metric tube connections, or create non-standard configurations by assembling with standard stock items in both single ferrule and double ferrule designs.

Bulkhead adapter tube fittings incorporate a tube stub end that allows a designer/fabricator the ability to install the bulkhead adapter in to a panel leaving the tube stub end on one side of the panel in both the single and double ferrule designs.



BULKHEAD ADAPTERS

- Uses include: instrumentation, high pressure and temperature, cryogenic service, and process and control systems where high-quality tube fittings are required.
- These tube fittings are designed using industrial codes and specifications with additional cutting-edge engineering on swaging action and sealing integrity.
- They also provide excellent leak-free sealing on high pressure gas, vacuum, impulse, thermal shock, heavy vibration and many other stringent applications.
- All tube fittings are double ferrule and consist of a body, front ferrule, back ferrule and nut.
- Stainless steel bar stock conforms to ASTM A276, ASTM 479, ASME SA479 and JIS GA 303
- Stainless steel forged fittings conform to ASTM A182, ASME SA 182 and JIS G3214
- The pressure rating of a BFO Tube Fitting is rated to the [working pressure of the connective tubing.](#)
- CAD drawings available upon request.

ADDITIONAL PRODUCT INFORMATION

COMPETITOR PART NUMBER			
BFO SKU#	SWAGELOK	SSP DUOLOK	PARKER A-LOK
30-BA-1/8	SS-200-R1-2	ISSD2BR2	2TUBC2-SS
30-BA-1/4	SS-400-R1-4	ISSD4BR4	4TUBC4-SS
30-BA-3/8	SS-600-R1-6	ISSD6BR6	6TUBC6-SS
30-BA-1/2	SS-810-R1-8	ISSD8BR8	8TUBC8-SS
30-BA-5/8	SS-1010-R1-10	ISSD10BR10	10TUBC10-SS
30-BA-1	SS-1610-R1-16	ISSD16BR16	16TUBC16-SS