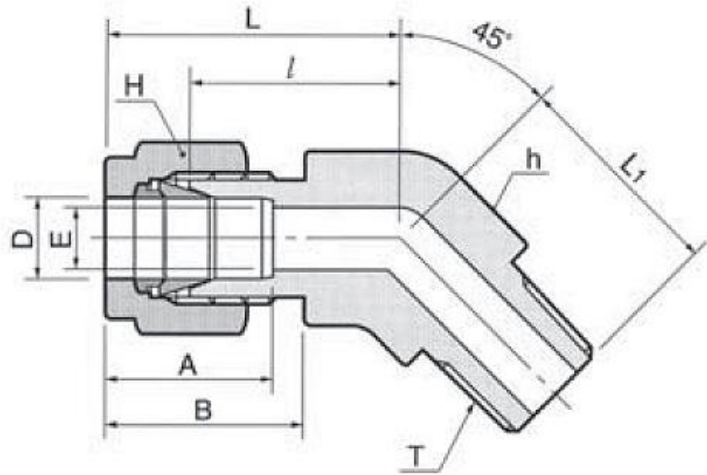
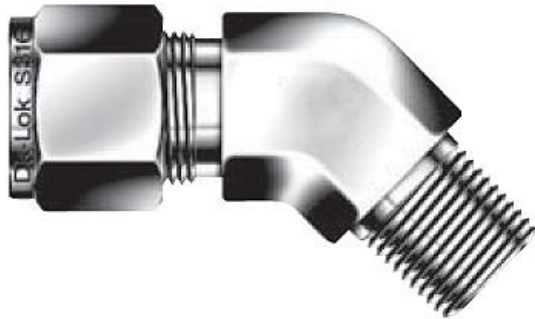


## 45 Degree Male Elbow MEF



Connects fractional compression tube end to female NPT thread  
Classification: Tube to Male Pipe

Part No.	Tube O.D. (D)		T NPT	E Min.	Width Across Flat				A	B	∠	L	L1
	in.	mm			h		H						
					in.	mm.	in.	mm.					
<b>30-MEF-1/8-1/8</b>	1/8	3.17	1/8	2.4	1/2	12.70	7/16	11.11	12.70	15.24	15.77	22.38	16.51
<b>30-MEF-1/4-1/8</b>	1/4	6.35	1/8	4.8	1/2	12.70	9/16	14.28	15.24	17.78	17.27	24.63	16.51
<b>30-MEF-1/4-1/4</b>	1/4	6.35	1/4	4.8	1/2	12.70	9/16	14.28	15.24	17.78	17.27	24.63	21.08
<b>30-MEF-3/8-1/8</b>	3/8	9.52	1/8	4.8	5/8	15.87	11/16	17.46	16.76	19.30	20.57	27.94	18.28
<b>30-MEF-3/8-1/4</b>	3/8	9.52	1/4	7.11	5/8	15.87	11/16	17.46	16.76	19.30	20.57	27.94	22.86
<b>30-MEF-3/8-3/8</b>	3/8	9.52	3/8	7.11	13/16	20.64	11/16	17.46	16.76	19.30	21.84	29.21	24.13
<b>30-MEF-1/2-3/8</b>	1/2	12.70	3/8	9.65	13/16	20.64	7/8	22.22	22.86	21.84	21.84	32.00	24.13
<b>30-MEF-1/2-1/2</b>	1/2	12.70	1/2	10.41	13/16	20.64	7/8	22.22	22.86	21.84	21.84	32.00	28.95
<b>30-MEF-3/4-3/4</b>	3/4	19.05	3/4	15.74	1-1/8	28.58	1-1/8	28.58	24.38	21.84	23.87	34.03	30.98
<b>30-MEF-1-1</b>	1	25.40	1	22.35	1-3/8	34.93	1-1/2	38.10	31.24	26.41	28.19	40.38	37.84

All dimensions are in millimeters unless otherwise specified, for reference only and subject to change\*

## ADDITIONAL PRODUCT INFORMATION

COMPETITOR PART NUMBER CROSS REFERENCE				
BFO SKU	SUPERLOK	SWAGELOK	SSP DUOLOK	PARKER A-LOK
30-MEF-1/8-1/8	--	--	--	--
30-MEF-1/4-1/8	LBM-4-2N	SS-400-5-2	ISSD4M45E2	4MVEL2N-SS
30-MEF-1/4-1/4	LBM-4-4N	SS-400-5-4	ISSD4M45E4	4MVEL4N-SS
30-MEF-3/8-1/8	LBM-6-2N	SS-600-5-2	ISSD6M45E2	6MVEL2N-SS
30-MEF-3/8-1/4	LBM-6-4N	SS-600-5-4	ISSD6M45E4	6MVEL4N-SS
30-MEF-3/8-3/8	LBM-6-6N	SS-600-5-6	ISSD6M45E6	6MVEL6N-SS
30-MEF-1/2-3/8	LBM-8-6N	SS-810-5-6	ISSD8M45E6	8MVEL6N-SS
30-MEF-1/2-1/2	LBM-8-8N	SS-810-5-8	ISSD8M45E8	8MVEL8N-SS
30-MEF-3/4-3/4	--	--	--	--
30-MEF-1-1	--	--	--	--

## FITTING SPECIFICATIONS & DATA



### Operating Pressures & Temperatures - Stainless Steel Compression Tubing

- **Applications Include:** Compression, Instrumentation, Vacuum, Gas, Cryogenic, High pressure & Temperature Service.
- All tube fittings are double ferrule and consist of a body, front ferrule, back ferrule and nut.
- Stainless steel bar stock conforms to ASTM A276, ASTM 479, ASME SA479 and JIS GA 303
- Stainless steel forged fittings conform to ASTM A182, ASME SA 182 and JIS G3214
- These tube fittings are designed using industrial codes and specifications with additional cutting-edge engineering on swaging action and sealing integrity.
- Provides excellent leak-free sealing on high pressure gas, vacuum, impulse, thermal shock, heavy vibration and many other stringent applications.
- **The pressure rating of a BFO Tube Fitting is rated to the [working pressure of the connective tubing](#).**