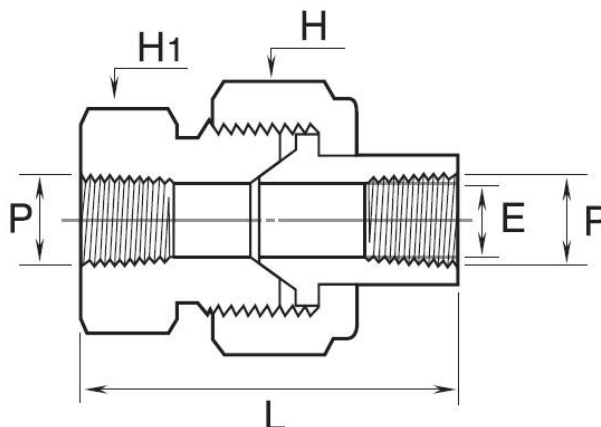


UNION BALL JOINTS

4056 – FEMALE x FEMALE NPT



End Connection: Female NPT to Female NPT Threads

Series: Standard High Pressure Instrumentation Threaded Fittings

Part Number	P NPT in.	L mm	E mm	H Hex mm	H1 Wrench Flat (mm)
4056-M	1/8	45.7	6.9	28.6	23.8
4056-N	1/4	59.4	9.1	34.9	30.2
4056-O	3/8	63.5	13.2	38.1	33.3
4056-P	1/2	68.6	15.7	44.5	41.3
4056-Q	3/4	79.2	22.4	50.8	47.6
4056-R	1	90.4	26.2	63.5	60.3

**All dimensions are in millimeters unless otherwise specified, for reference only and subject to change.



[Instrumentation Pipe & Weld Fittings
Specifications & Pressure Ratings](#)

- Wrench flat body design allowing standard hex wrench assembly
- Attractive finishes to suit precision equipment.
- Much less-weight design compared to Class 3000 pipe fittings.
- Fine pipe thread construction equals or exceeds the requirement of ASME B1.20.1 to ensure maximum thread engagement.
- Male pipe threads capped for protection from damages.
- Fitting materials available in SS316, Brass and Carbon Steel.
- These Standard Rating Fittings are designed to the requirements of ASME B31.3 process piping code.
- These pipe thread sizes are available 1/8 in. to 1 in. NPT