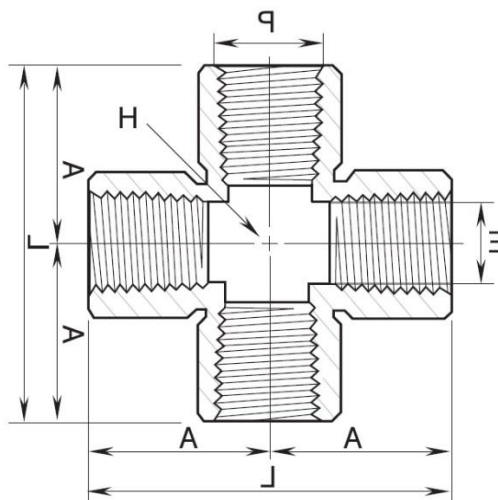


FEMALE CROSS

4003 – FEMALE x FEMALE x FEMALE x FEMALE NPT



End Connection: All 4 end connections are the equivalent pipe size with female NPT threads.

Series: Standard High Pressure Instrumentation Threaded Fittings

Part Number	P NPT in.	L mm	E mm	H Wrench Flat mm	Pressure Rating psig (bar)	
					SS316, C.Steel	Brass
4003-M	1/8	48.2	8.6	12.7	6200 (427)	3100 (213)
4003-N	1/4	58.0	11.4	17.5	7200 (496)	3600 (248)
4003-O	3/8	69.0	15.0	20.6	5600 (385)	2800 (192)
4003-P	1/2	74.0	18.5	25.4	5600 (385)	2800 (192)
4003-Q	3/4	93.0	23.9	31.8	5100 (351)	2500 (172)
4003-R	1	97.6	29.7	42.9	5300 (365)	2600 (179)

**All dimensions are in millimeters unless otherwise specified, for reference only and subject to change.



PDF Spec Sheet Includes the following:

- Threaded Fittings Standard Pressure Ratings
 - Material Standards and Temperature Ratings
 - Temperature De-Rating Factors
 - Temperature Ratings of O-Ring, Gasket Materials
 - Pipe Thread Designators
-

Features of Threaded Fittings:

- Wrench flat body design allowing standard hex wrench assembly
- Attractive finishes to suit precision equipment.
- Much less-weight design compared to Class 3000 pipe fittings.
- Fine pipe thread construction equals or exceeds the requirement of ASME B1.20.1 to ensure maximum thread engagement.
- Male pipe threads capped for protection from damages.
- Fitting materials available in SS316, Brass and Carbon Steel.
- These Standard Rating Fittings are designed to the requirements of ASME B31.3 process piping code.
- These pipe thread sizes are available 1/8 in. to 1 in. NPT