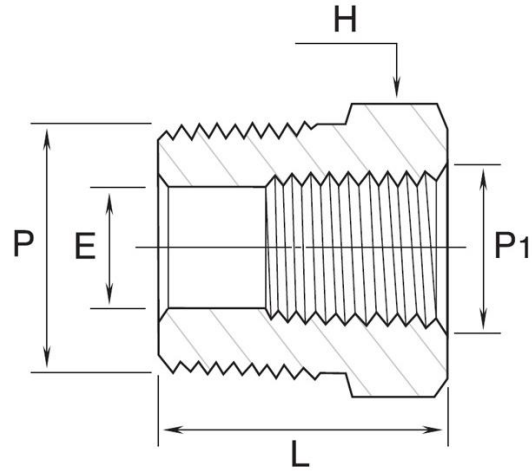


REDUCING HEX BUSHING

4026 – MALE NPT x FEMALE NPT



End Connection: Male NPT to Reduced Female NPT Threads
Series: Standard High Pressure Instrumentation Threaded Fittings

Part Number	P Male NPT in.	P1 Female NPT in.	L mm	E mm	H Hex	Working Pressure bar (psig)	
						SS316,C.Steel	Brass
4026-NM	1/4	1/8	26.7	7.1	14.2	447 (6400)	227 (3200)
4026-OM	3/8	1/8	21.8	8.5	17.4	633 (9100)	323 (4600)
4026-ON	3/8	1/4	30.0	9.6	19.05	454 (6500)	227 (3200)
4026-PM	1/2	1/8	27.4	8.5	22.2	840 (12100)	427 (6100)
4026-PN	1/2	1/4	27.4	11.7	22.2	571 (8200)	303 (4300)
4026-PO	1/2	3/8	35.6	11.9	22.2	365 (5200)	179 (2500)
4026-QN	3/4	1/4	27.4	11.4	26.9	826 (11900)	413 (5900)
4026-QO	3/4	3/8	27.4	15.0	26.9	564 (8100)	296 (4200)
4026-QP	3/4	1/2	41.4	15.7	26.9	337 (4800)	165 (2300)
4026-RN	1	1/4	34.8	11.4	34.9	999 (14400)	509 (7300)
4026-RP	1	1/2	34.8	18.5	34.9	592 (8500)	296 (4200)
4026-RQ	1	3/4	34.8	22.4	34.9	365 (5200)	179 (2500)

**All dimensions are in millimeters unless otherwise specified, for reference only and subject to change.



Instrumentation Pipe & Weld Fittings Specifications & Pressure Ratings

PDF Spec Sheet Includes the following:

- **Threaded Fittings Standard Pressure Ratings**
 - **Material Standards and Temperature Ratings**
 - **Temperature De-Rating Factors**
 - **Temperature Ratings of O-Ring, Gasket Materials**
 - **Pipe Thread Designators**
-

Features of Threaded Fittings:

- Wrench flat body design allowing standard hex wrench assembly
- Attractive finishes to suit precision equipment.
- Much less-weight design compared to Class 3000 pipe fittings.
- Fine pipe thread construction equals or exceeds the requirement of ASME B1.20.1 to ensure maximum thread engagement.
- Male pipe threads capped for protection from damages.
- Fitting materials available in SS316, Brass and Carbon Steel.
- These Standard Rating Fittings are designed to the requirements of ASME B31.3 process piping code.
- These pipe thread sizes are available 1/8 in. to 1 in. NPT