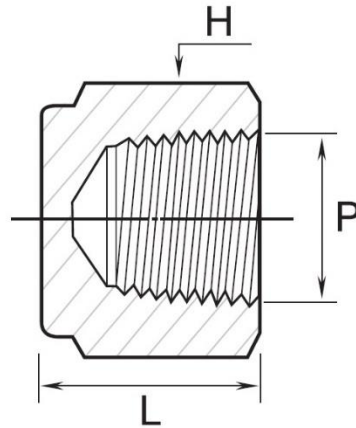
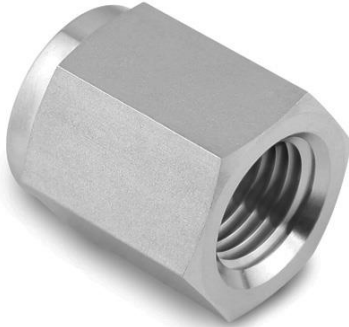


## PIPE CAP

### 4028 – FEMALE NPT



**End Connection:** Female NPT Threaded

**Series:** Standard High Pressure Instrumentation Threaded Fittings

Part Number	P NPT in.	L mm	H Hex mm	Pressure Rating psig (bar)
4028-M	1/8	19.1	14.2	6100 (420)
4028-N	1/4	22.9	19.05	6300 (434)
4028-O	3/8	26.2	22.2	5000 (345)
4028-P	1/2	34.0	26.9	4700 (324)
4028-Q	3/4	36.6	33.3	4400 (303)
4028-R	1	41.1	41.2	5300 (296)

\*\*All dimensions are in millimeters unless otherwise specified, for reference only and subject to change.



**PDF Spec Sheet Includes the following:**

- **Threaded Fittings Standard Pressure Ratings**
  - **Material Standards and Temperature Ratings**
  - **Temperature De-Rating Factors**
  - **Temperature Ratings of O-Ring, Gasket Materials**
  - **Pipe Thread Designators**
- 

**Features of Threaded Fittings:**

- Wrench flat body design allowing standard hex wrench assembly
- Attractive finishes to suit precision equipment.
- Much less-weight design compared to Class 3000 pipe fittings.
- Fine pipe thread construction equals or exceeds the requirement of ASME B1.20.1 to ensure maximum thread engagement.
- Male pipe threads capped for protection from damages.
- Fitting materials available in SS316, Brass and Carbon Steel.
- These Standard Rating Fittings are designed to the requirements of ASME B31.3 process piping code.
- These pipe thread sizes are available 1/8 in. to 1 in. NPT