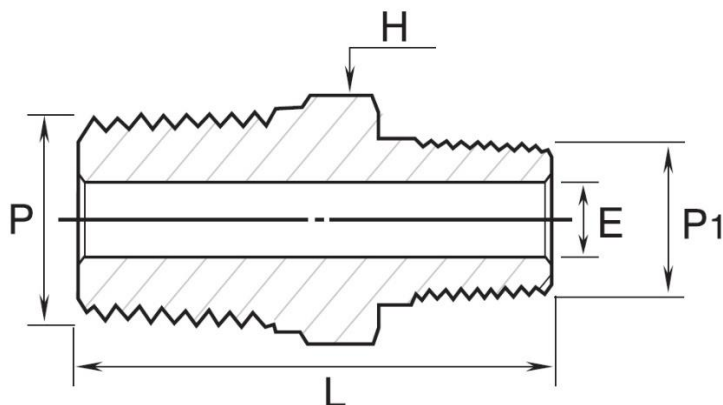


REDUCING HEX NIPPLE

4050 – MALE X MALE NPT



End Connection: Male NPT to Reduced Male NPT

Series: Standard High Pressure Instrumentation Threaded Fittings

Part Number	(P) NPT (in.)	(P1) Reduced NPT in.	L (mm)	E (mm)	(H) Hex (mm)
4050-N-RHN	1/4	1/8	30.7	4.8	14.2
4050-OM-RHN	3/8	1/8	32.0	4.8	17.4
4050-O-RHN	3/8	1/4	36.1	7.1	17.4
4050-PM-RHN	1/2	1/8	37.2	4.8	22.2
4050-PN-RHN	1/2	1/4	41.7	7.1	22.2
4050-PO-RHN	1/2	3/8	41.7	9.6	22.2
4050-QN-RHN	3/4	1/4	41.7	7.1	26.9
4050-QP-RHN	3/4	1/2	46.7	11.9	26.9
4050-RO-RHN	1	1/4	49.3	7.1	34.9
4050-RP-RHN	1	1/2	54.1	11.9	34.9

**All dimensions are in millimeters unless otherwise specified, for reference only and subject to change.



[Instrumentation Pipe & Weld Fittings
Specifications & Pressure Ratings](#)

- Wrench flat body design allowing standard hex wrench assembly
- Attractive finishes to suit precision equipment.
- Much less-weight design compared to Class 3000 pipe fittings.
- Fine pipe thread construction equals or exceeds the requirement of ASME B1.20.1 to ensure maximum thread engagement.



[Long Hex Nipples
Drawing & Dimensions](#)

- Male pipe threads capped for protection from damages.
- Fitting materials available in SS316, Brass and Carbon Steel.
- These Standard Rating Fittings are designed to the requirements of ASME B31.3 process piping code.
- These pipe thread sizes are available 1/8 in. to 1 in. NPT