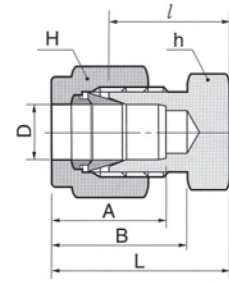
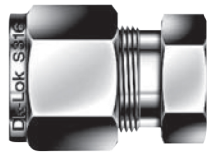


Cap



Caps fractional tube end

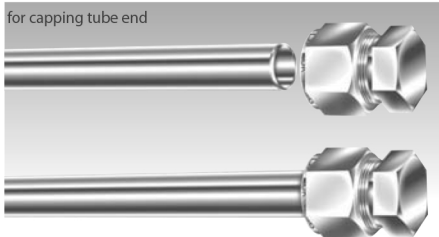
Part No.	Tube O.D.		Width across flat				A	B	l	L
	D		h		H					
	in.	mm	in.	mm	in.	mm				
	1/16	1.59	5/16	7.93	5/16	7.93	8.63	10.92	11.20	14.18
30-C-1/8	1/8	3.17	7/16	11.11	7/16	11.11	12.70	15.24	13.46	20.06
30-C-3/16	3/16	4.76	7/16	11.11	1/2	12.70	13.71	16.00	14.73	21.33
30-C-1/4	1/4	6.35	1/2	12.70	9/16	14.28	15.24	17.78	16.00	23.26
30-C-5/16	5/16	7.93	9/16	14.28	5/8	15.87	16.25	18.54	17.01	24.38
30-C-3/8	3/8	9.52	5/8	15.87	11/16	17.46	16.76	19.30	18.28	25.65
30-C-1/2	1/2	12.70	13/16	20.63	7/8	22.22	22.86	21.84	19.05	29.21
30-C-5/8	5/8	15.87	15/16	23.81	1	25.40	24.38	21.84	19.81	29.97
30-C-3/4	3/4	19.05	1-1/16	26.98	1-1/8	28.57	24.38	21.84	21.33	31.49
30-C-7/8	7/8	22.22	1-3/16	30.16	1-1/4	31.75	25.90	21.84	23.87	34.03
30-C-1	1	25.40	1-3/8	34.92	1-1/2	38.10	31.24	26.41	26.16	38.35
	1-1/4	31.75	1-3/4	44.45	1-7/8	47.63	41.14	38.86	31.24	53.34
	1-1/2	38.10	2-1/8	53.98	2-1/4	57.15	50.15	45.21	37.33	64.51
	2	50.80	2-3/4	69.85	3	76.20	67.56	62.73	49.27	86.61

Caps metric tube ends

Part No.	Tube O.D. D	Width across flat		A	B	l	L
		h	H				
	2	12	12	12.9	15.3	13.5	20.1
	3	12	12	12.9	15.3	13.5	20.1
	4	12	12	13.7	16.1	14.7	21.3
	6	14	14	15.3	17.7	15.7	23.1
	8	15	16	16.2	18.6	17.0	24.5
	10	18	19	17.2	19.5	19.0	26.6
	12	22	22	22.8	22.0	19.0	29.1
	15	24	25	24.4	22.0	19.8	29.9
	16	24	25	24.4	22.0	19.8	29.9
	18	27	30	24.4	22.0	21.3	31.4
	20	30	32	26.0	22.0	23.9	34.0
	22	30	32	26.0	22.0	23.9	34.0
	25	35	38	31.3	26.5	26.2	38.5
	28	41	46	36.6	36.6	27.7	48.5
	32	46	50	42.0	41.6	32.8	55.8
	38	55	60	49.4	47.9	37.8	65.4

Installation Instructions

for capping tube end



Cap is for capping tubing end

1. Insert tube end into the cap
 - Make sure tube end bottoms on the shoulder of the cap.
2. Finger-tighten the nut
3. Wrench-tighten the nut 1 1/4 turns beyond the finger tight position, keeping the body steady with a backup wrench.
 - Tightens 3/4 turns for 1/16, 1/8, and 3/16 in.; 2, 3, and 4mm fittings.
 - For re-use, see re-assembly instruction

BFO can provide a quote for all sizes listed in the table*
All dimensions are in millimeters unless otherwise specified, only for reference and subject to change